

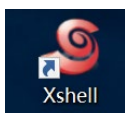


教师个人网站（个性版）操作手册

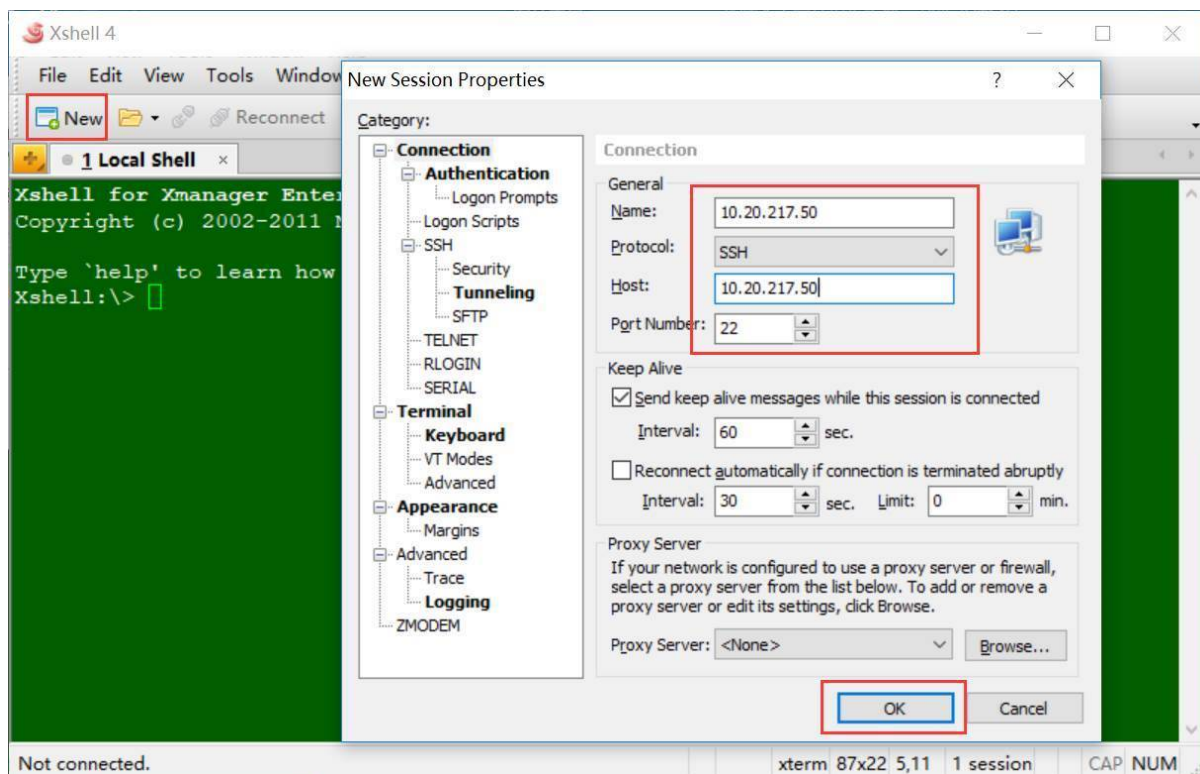
Individual website (personalized version) Manual

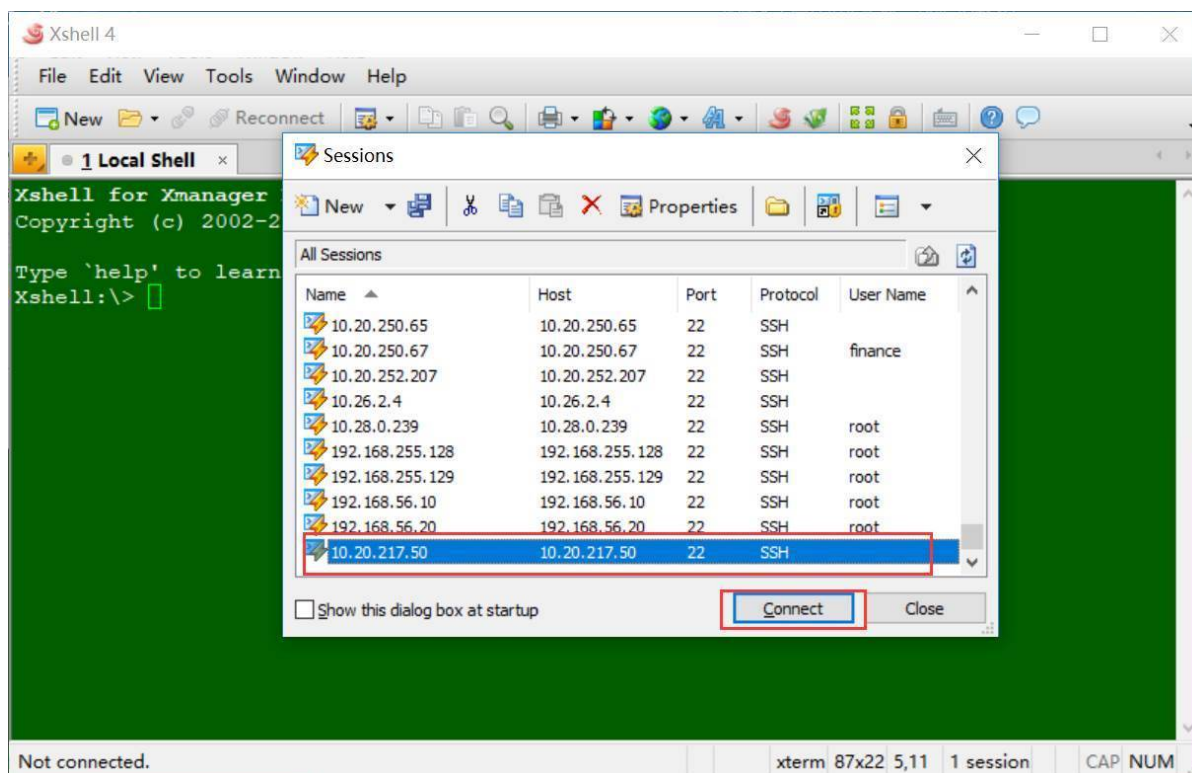
1. 先下载一个能连接服务器终端的工具，如 Xshell、filezilla、WinSCP 等都可以（该工具需用户自行从互联网上下载，本操作手册以 Xshell 为例，讲解如何上传自制网页，其他工具操作方法类似）。

Download a tool that can connect to the server terminal, such as Xshell, filezilla, WinSCP, etc. (The tool needs to be downloaded from the Internet by the user. This operation manual uses Xshell as an example to explain how to upload self-made web pages)

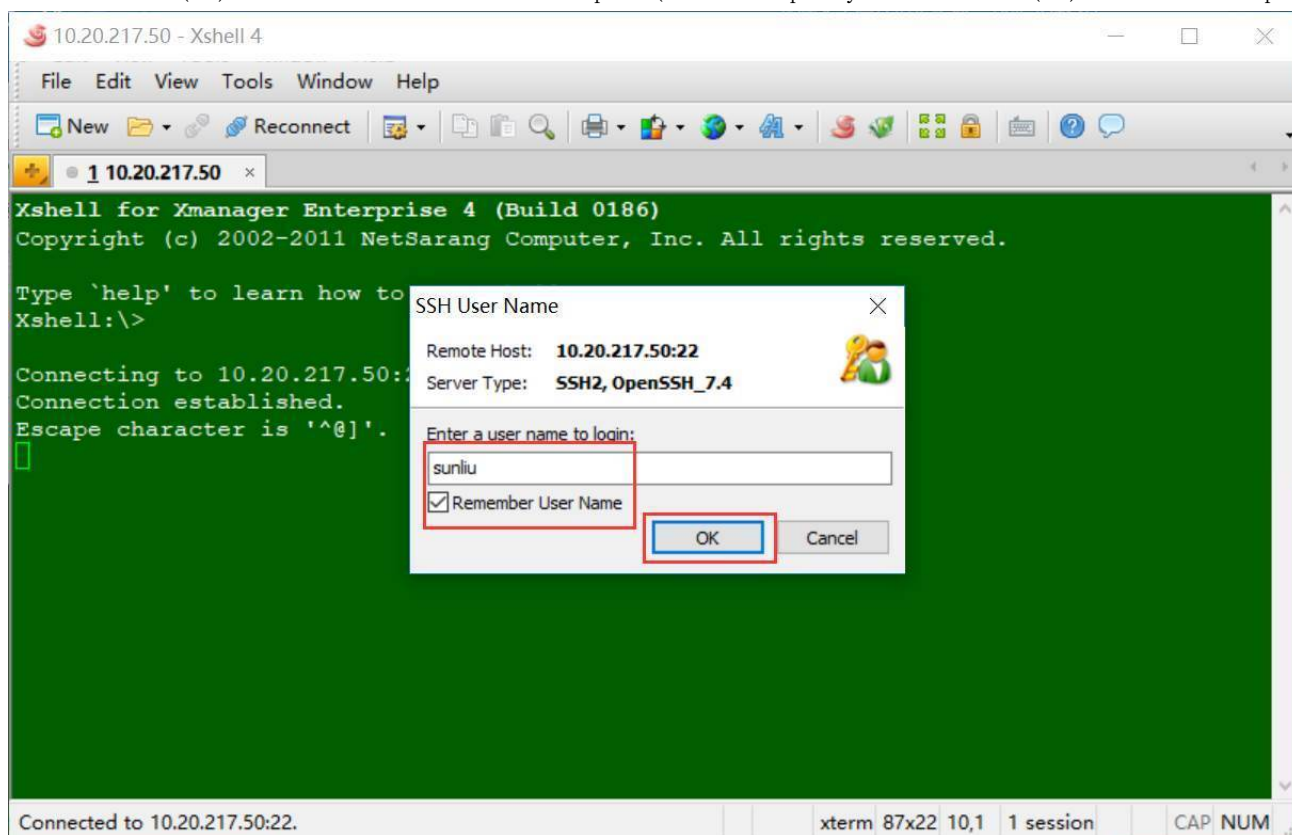


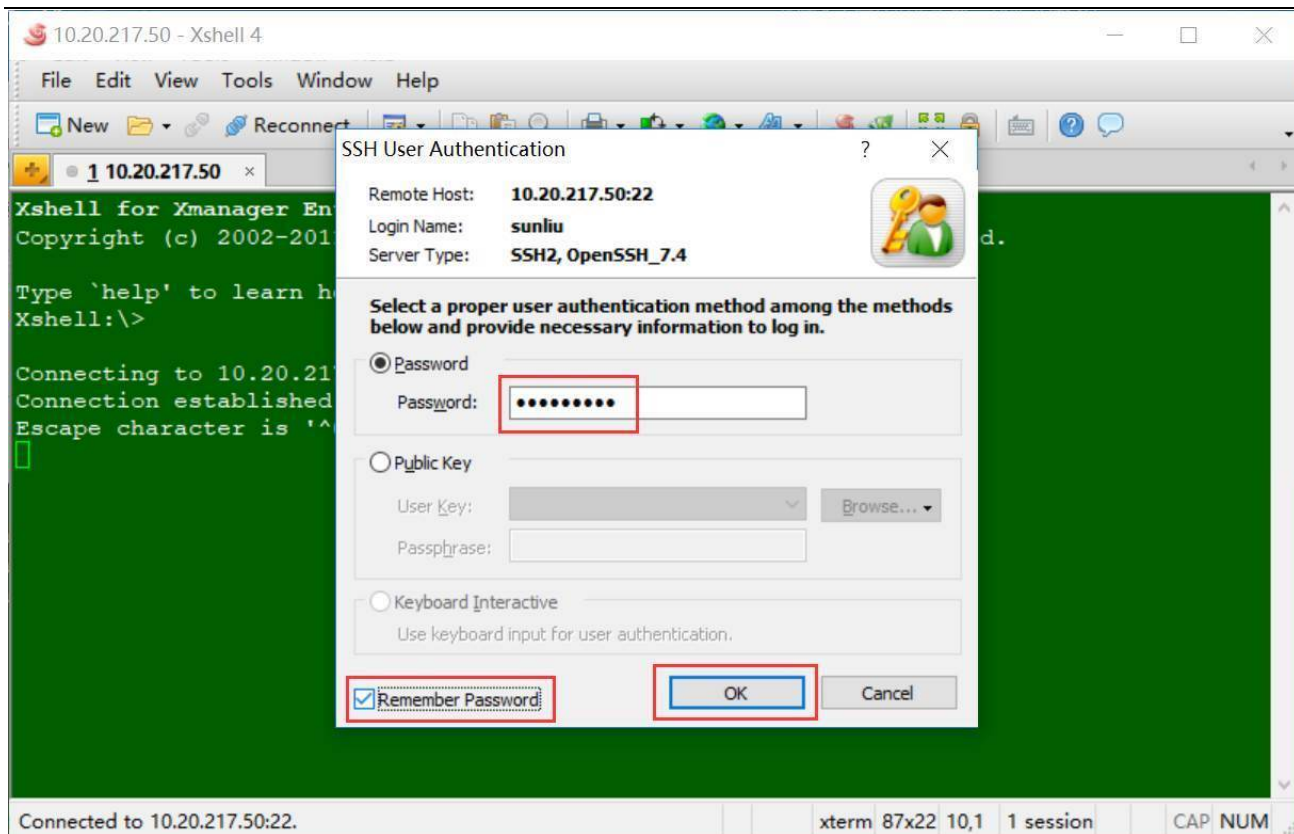
2. 双击打开 Xshell 后，用自己的 CUHK(SZ) 账号登陆服务器 10.20.217.50（按下图红框操作）。
Double click Xshell, log in the server 10.20.217.50 using your CUHK(SZ) account.





此处 CUHK(SZ) 账号以 sunliu 为例（实际操作的时候，用的是用户自己的 CUHK(SZ) 账号和 CUHK(SZ) 账号密码）
Use the CUHK(SZ) account sunliu as an example (Please input your own CUHK(SZ) account and password).



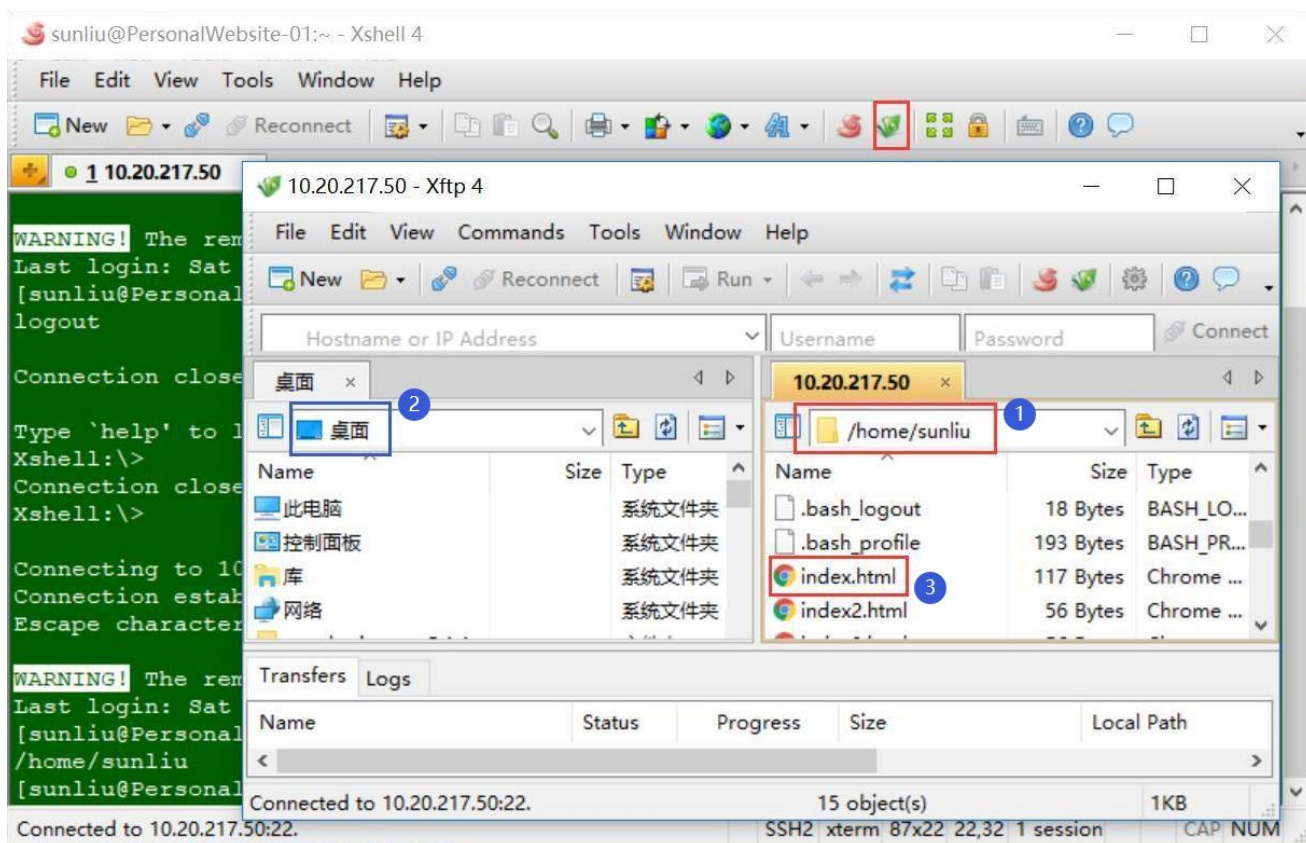


3. 通过 Xshell 将自己本地电脑的 html 文件上传到服务器上（按下图红框操作）。注意：

- ① 右侧红框的路径是固定的，用户自己也无法切换其他路径（因为没有上传的权限）。
- ② 左侧蓝框的路径是用户本地电脑存放 html 文件的地方，html 文件放在本地电脑的哪，就指向该位置。
- ③ 同时再注意下右边红框标出的 index.html 这个文件，该文件是个人网页的首页，用户的个人首页必须命名成此名（除首页外，其它页面没有命名要求）
- ④ 需要上传什么文件，直接拖拽要上传的文件到右侧即可。

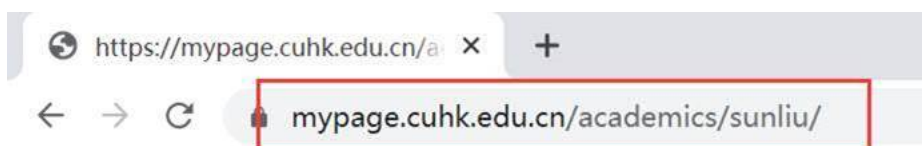
Upload the html file of your local computer to the server via Xshell. Please Note:

- ① The path in the red box on the right is fixed, and users cannot switch to other paths themselves (because they don't have the upload permission).
- ② The path in the blue box on the left is the place where the html file is stored on the user's local computer.
- ③ At the same time, pay attention to the index.html file marked in the red box on the right. This file is the home page of the personal web page, and the user's personal home page must be named as it (except for the home page, other pages have no naming requirements)
- ④ Drag and drop the files which need to be uploaded to the right side.



4. 个人网页的网址为：[https://mypage.cuhk.edu.cn/academics/CUHK\(SZ\)账号/](https://mypage.cuhk.edu.cn/academics/CUHK(SZ)账号/)，比如 CUHK(SZ)账号如果是 sunliu，那么网址就为：<https://mypage.cuhk.edu.cn/academics/sunliu/>。等 10 分钟左右，上传的网页即可显示出来(用户每次网页有更新，都要等 10 分钟，更新的地方才能反映出来)

The URL of the personal web page is: [https://mypage.cuhk.edu.cn/academics/CUHK\(SZ\) account/](https://mypage.cuhk.edu.cn/academics/CUHK(SZ) account/), for example, if the CUHK(SZ) account is sunliu, then the URL is: <https://mypage.cuhk.edu.cn/academics/sunliu/>. Wait about 10 minutes, the uploaded webpage can be displayed (every time the webpage is updated, the user has to wait 10 minutes for the updated place to be displayed)



10.20.217.50

20190827

20190902 hello world

注意：资源使用有限制，每个用户最多使用 3G 空间，最多上传 3000 个文件。超过限制，将不能上传文件。
Resource usage is limited. Each user can use up to 3G space and upload up to 3000 files. If the limit is exceeded, the file cannot be uploaded.